



**Snowplow Wear
Parts Catalog
2020-21**

About Us

Ironhawk Industrial Distribution LLC is committed to the innovative science and efficient practice of removing ice and snow from roadways and other travel surfaces. Snow plow cutting blades are our primary focus - it's what we do and who we are. Our products are conceived, designed and manufactured to consistently deliver real results and measurable value to our customers - this season and every season.

President

Patrick Hawkins

Sales & Support

Karen Ryan - Sales Rep

(216) 502-3700

karen@ironhawkindustrial.com

Technical Support

Eric Fox

(814) 229-0362

eric@ironhawkindustrial.com

Justin Johnston

(814) 316-1092

justin@ironhawkindustrial.com

Skip Wolfe

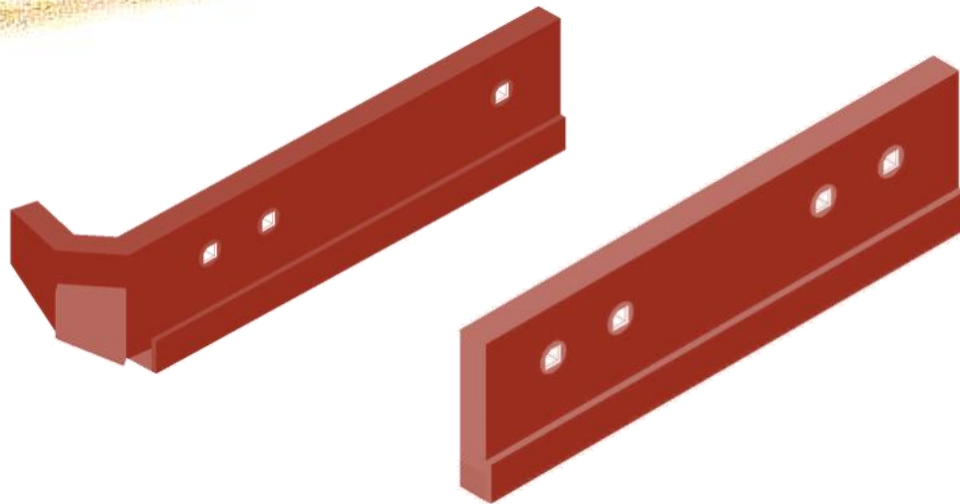
(440) 527-3839

skipwolfe@ironhawkindustrial.com



Ironhawk's new 50,000 ft² HQ

SNOWPLOW BLADE PROTECTORS



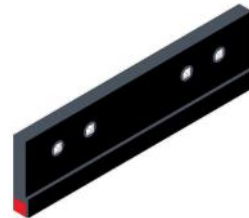
BLADE PROTECTORS

BP Series Blade Protectors

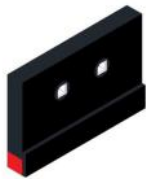
The BP series offers the greatest flexibility of curved and straight-end geometries, hardfacing, and AR wearpatch options. BP Series plow guards provide superior wear protection by using over 6 pounds of carbide hardfacing on the bottom wear edge, and the curved version features a rectangular carbide hardfacing patch on the curved surface for wear protection against curbs and jersey barriers. This series also comes in various gauges and bolt patterns to work with multiple types of plows.



Blade Protector Curve, Right or Left
Part #: BP126xxxCR/L



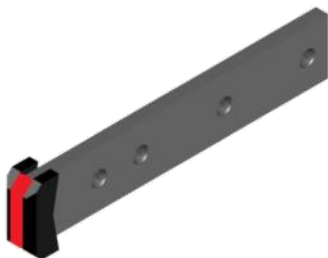
Blade Protector Curve, Straight
Part #: BP126xxxS



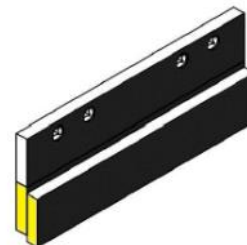
Blade Protector, Straight Mini
Part #: BP126xxxSM



Blade Protector, Curb Runner
Part #: BP126xxxSER/L



Blade Protector, Universal
Part #: UG-478



Blade Protector, AR
Part #: BP126xxxAR

BLADE PROTECTORS

SG Series Blade Protectors

The SG Series plow guards and curb runners are designed specifically for our Lake Effect and Joma-style articulating plow blades. They feature a tapered front profile that allows these blades to ride over bridge and expansion joints, which helps prevent costly bent and broken plow blades. The left and right curb runners feature an AR500 with carbide hard-face wear surface to hold up against jersey barriers and curbs.



Curb Runner, Right
Part #: SG126112LR

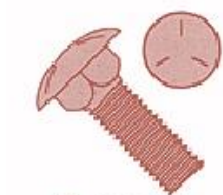


Curb Runner, Left
Part #: SG126112LL



Center Guard, Straight
Part #: SG126112CTR

SNOWPLOW HARDWARE



HARDWARE

	Length	Part #	Description	Grade	Box Qty*
5/8" Plow & Carriage Bolts	2.25"	PB58214	Plow Bolt	8	150
	2.5"	PB58212	Plow Bolt	8	150
	3"	PB58300	Plow Bolt	8	120
	3.5"	PB58312	Plow Bolt	8	120
	4"	PB58400	Plow Bolt	8	80
	4.5"	PB58412	Plow Bolt	8	80
	5"	PB58500	Plow Bolt	8	80
	4"	CA58400	Carriage Bolt	8	90
5/8" Nuts and Washers	-	SN580	Stover Lock Nut	8	700
	-	FN580	Flange Lock Nut	8	350
	-	HN580	Hex Nut (15/16 Head)	8	600
	-	HHN580	Hex Nut (1-1/16 Head)	8	Call
	-	NL580	Nylon Insert Lock Nut	8	500
	-	SW580	Split Lock Washers	8	2,000
	-	FW580	Heavy Duty Flat Washers	8	1,050
Loader Edge Hardware	-	PB34300	Plow Bolt PB34300	8	Call
	-	HN340	Hex Nut HN340	8	Call
	-	PB10300	Plow Bolt PB10300	8	Call
	-	HN100	Hex Nut HN100	8	Call

- Box quantities are subject to change
- Hardware prices do not include freight



Plow Bolt



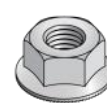
Stover Lock Nut



Carriage Bolt



Flange Bolt

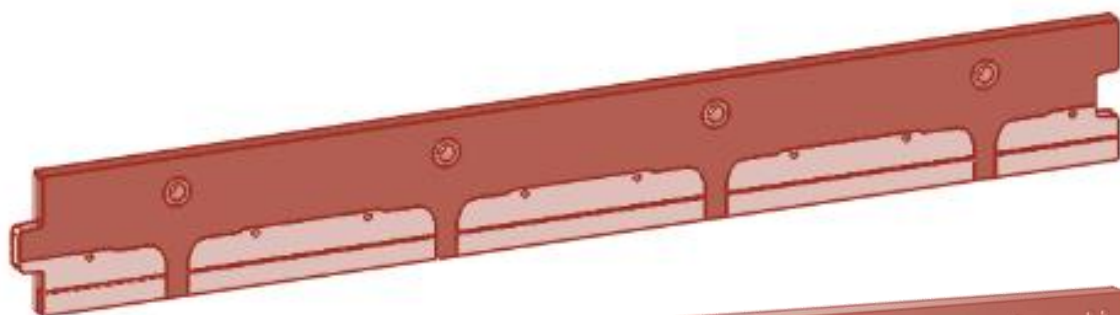


Flange Lock



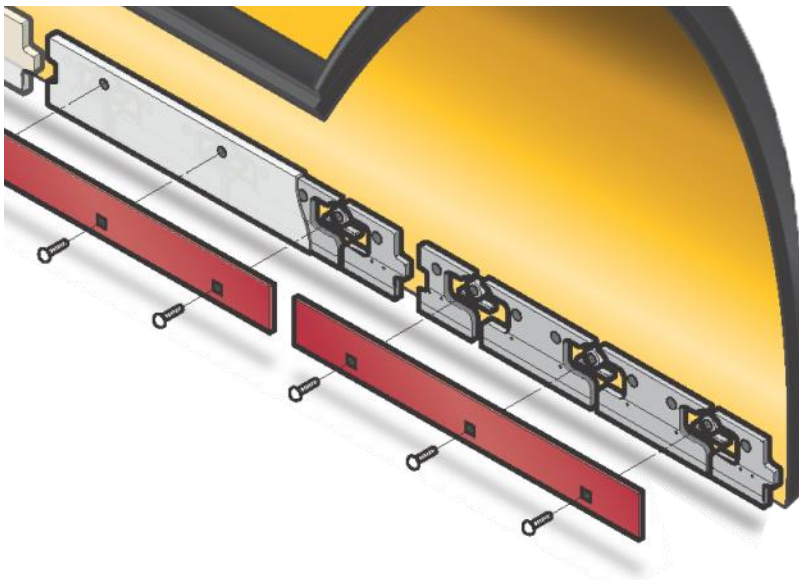
Flat Washer

PLOW BLADES



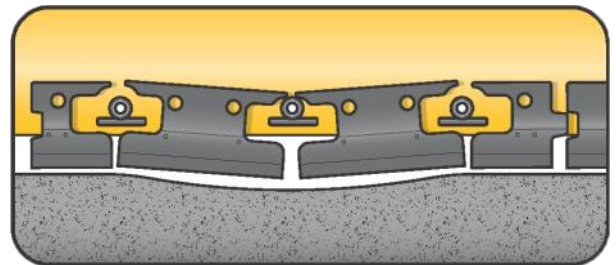
LAKE EFFECT™

The Next Generation in Articulating Plow Blades



Efficient Snow Removal

Independent, carbide insert, steel segments are embedded in urethane allowing them to independently articulate and follow the contour of the road. The unique design features bushings between the segments, allowing a greater degree of movement.



Stronger Steel Segments

Lake Effect™ blades feature full-height steel segments that have 32% more steel than the shorter Joma segment. This extra mass gives the segments the strength to withstand an impact without folding under.



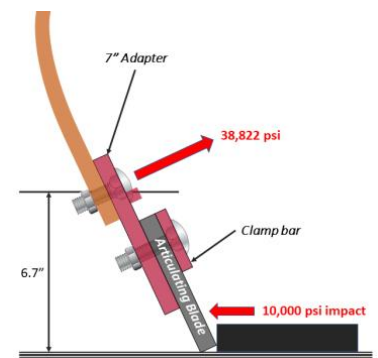
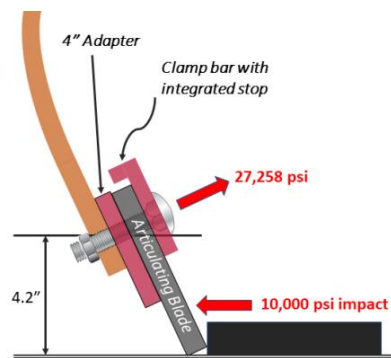
Blade Protector Options

All initial Lake Effect™ kits come with left and right SG Series corner guards. An optional center guard is available.



4" Carbide Insert Adapter

A plow cutting edge can experience an impact force of over 10,000 psi when it hits an object such as a manhole cover. The standard 7" Joma adapter blade acts as a lever and multiplies that force through mechanical advantage to 38,822 psi of bolt-snapping force. The 4" Lake Effect™ adapter blade shortens the lever arm, reducing the force transmitted to the bolts by over 30%!



IRONHAWK®

PHONE: 888.843.8612 FAX: 216.481.1156

EMAIL: sales@ironhawkindustrial.com

PLOW BLADES

Ironhawk® Lake Effect™ Articulating Blade System Components



Lake Effect™ Blade Segment



Ironhawk® 4" Adapter Blade



Ironhawk® 7" Adapter Blade - Standard



Ironhawk® Clamp Bar for 4" Adapter



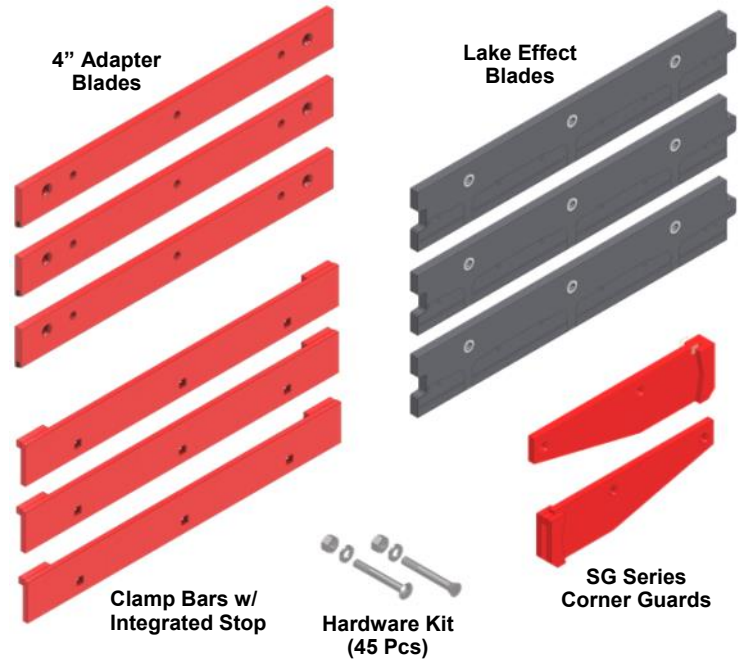
Ironhawk® Clamp Bar - Standard

Description	Part #
36" Lake Effect Blade Segment	LE36
48" Lake Effect™ Blade Segment	LE48
36" Clamp Bar - Standard	LE36CB
48" Clamp Bar - Standard	LE48CB
36" Clamp Bar - for 4" Adapter	LE36CB-TE
48" Clamp Bar - for 4" Adapter	LE48CB-TE
36" Ironhawk® Adapter Blade - 4"	AB36A4C
48" Ironhawk® Adapter Blade - 4"	AB48A4C
36" Ironhawk® Adapter Blade - 7"	AB36A7
48" Ironhawk® Adapter Blade - 7"	AB48A7
Lake Effect Bolt Kit	KIT-LE12R

LAKE EFFECT™ BLADE SYSTEM KITS

We have bundled our Lake Effect™ Articulating Blade Systems into kits. A single part number will get you everything needed, including:

- (3) Lake Effect™ blade segments
- (3) 4" Adapter Blade
- (3) Clamp Bar with Integrated Stop
- (2) Lake Effect™ SG Series Corner Guards
- (1) Grade 8 Hardware Kit
- (1) Installation Instructions
- (1) Systems are individually crated



Description	Part #
8 ft Lake Effect Articulating Blade System - Initial Set-up Kit	PBA-LE8-TEC
9 ft Lake Effect Articulating Blade System - Initial Set-up Kit	PBA-LE9-TEC
10 ft Lake Effect Articulating Blade System - Initial Set-up Kit	PBA-LE10-TEC
11 ft Lake Effect Articulating Blade System - Initial Set-up Kit	PBA-LE11-TEC
12 ft Lake Effect Articulating Blade System - Initial Set-up Kit	PBA-LE12-TEC
14 ft Lake Effect Articulating Blade System - Initial Set-up Kit	PBA-LE14-TEC
8 ft Lake Effect Articulating Blade System - Replacement Kit	PBA-LE8R-TEC
9 ft Lake Effect Articulating Blade System - Replacement Kit	PBA-LE9R-TEC
10 ft Lake Effect Articulating Blade System - Replacement Kit	PBA-LE10R-TEC
11 ft Lake Effect Articulating Blade System - Replacement Kit	PBA-LE11R-TEC
12 ft Lake Effect Articulating Blade System - Replacement Kit	PBA-LE12R-TEC
14 ft Lake Effect Articulating Blade System - Replacement Kit	PBA-LE14R-TEC

PLOW BLADES

Ironhawk® Joma-style Articulating Blade System Components



Joma-Style Blade Segment
(Direct replacement for Joma)



Ironhawk® 4" Adapter Blade



Ironhawk® 7" Adapter Blade—Standard



Ironhawk® Clamp Bar for 4" Adapter



Ironhawk® Clamp Bar – Standard

Description	Part #
36" Joma-style Blade Segment	DB4273182
48" Joma-style Blade Segment	DB4273183
36" Clamp Bar - Standard	LE36CB
48" Clamp Bar - Standard	LE48CB
36" Clamp Bar - Trip Edge	LE36CB-TE
48" Clamp Bar - Trip Edge	LE48CB-TE
36" Ironhawk® Adapter Blade - 4"	AB36A4C
48" Ironhawk® Adapter Blade - 4"	AB48A4C
36" Ironhawk® Adapter Blade - 7"	AB36A7
48" Ironhawk® Adapter Blade - 7"	AB48A7

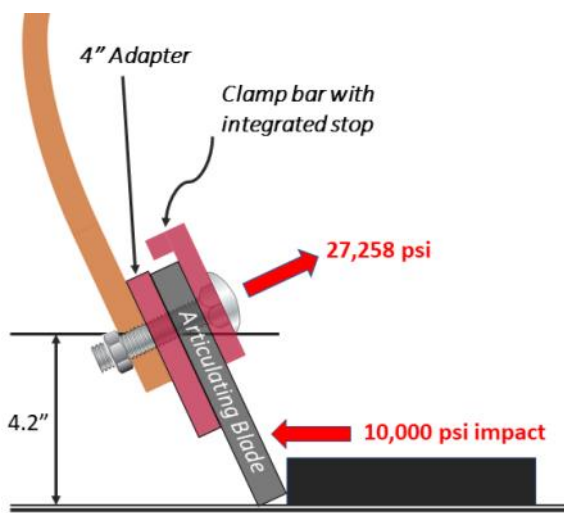
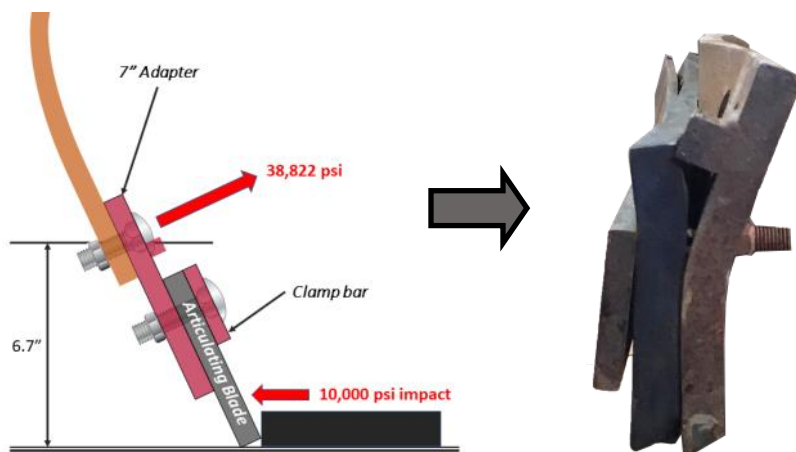
PLOW BLADES

Brace for Impact: Bent Joma Adapter Blades

A plow cutting edge can experience an impact force of over 10,000 psi when it hits an object such as a manhole cover, water box, or expansion joint. When the leading edge of the blade makes impact, the combined cutting edge and adapter blade acts as a lever that pivots against the bottom of the moldboard and can actually increase the forces that the adapter blade bolts see! This leads to broken bolts and bent adapter blades at the worst possible time.

Problem: 7" Adapter Blade

The traditional 7" Joma Adapter Blade extends the blade system below the moldboard 3" more than a standard blade for a total blade height of 9". The longer extension increases the length of the lever arm, providing a mechanical advantage that multiplies the force of the 10,000 psi impact to a bolt-snapping 38,822 psi!



Solution: 4" Ironhawk® Adapter Blade

Ironhawk Industrial's 4" Adapter Blade corrects the geometry of the blade system by reducing the total blade system height to a standard 6". This reduces the length of the lever arm, which will reduce the force that the mounting bolts see by over 30%, preventing broken bolts and bent adapter blades when it matters most.

The Ironhawk® 4" Adapter Blade uses carbide inserts to provide additional protection for the moldboard. The compact design uses only a single set of bolts and moves the integrated stop from the adapter bar to the clamp bar.

IRONHAWK®

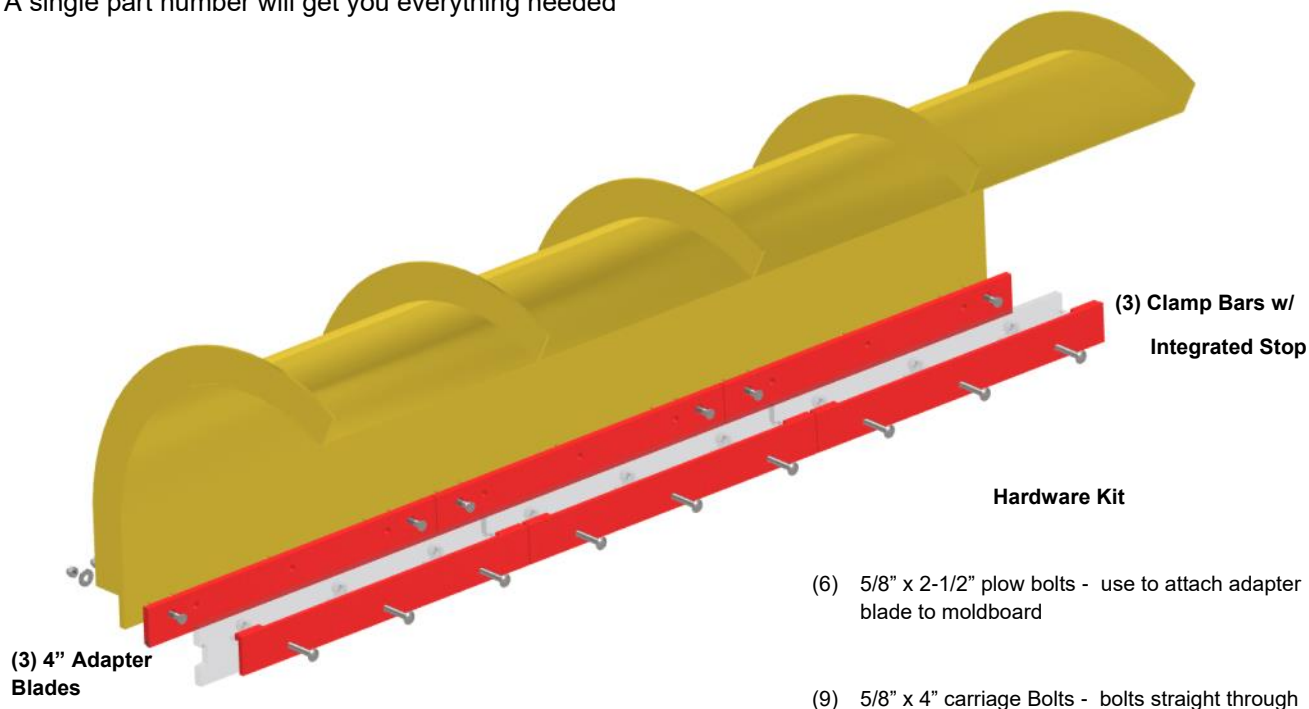
PHONE: 888.843.8612 FAX: 216.481.1156

EMAIL: sales@ironhawkindustrial.com

PLOW BLADES

We have bundled our popular Ironhawk® 4" Adapter Blade Systems into kits. The Ironhawk 4" Adapter Blade Kit includes everything you need to retrofit your existing 7" Joma adapter blade.

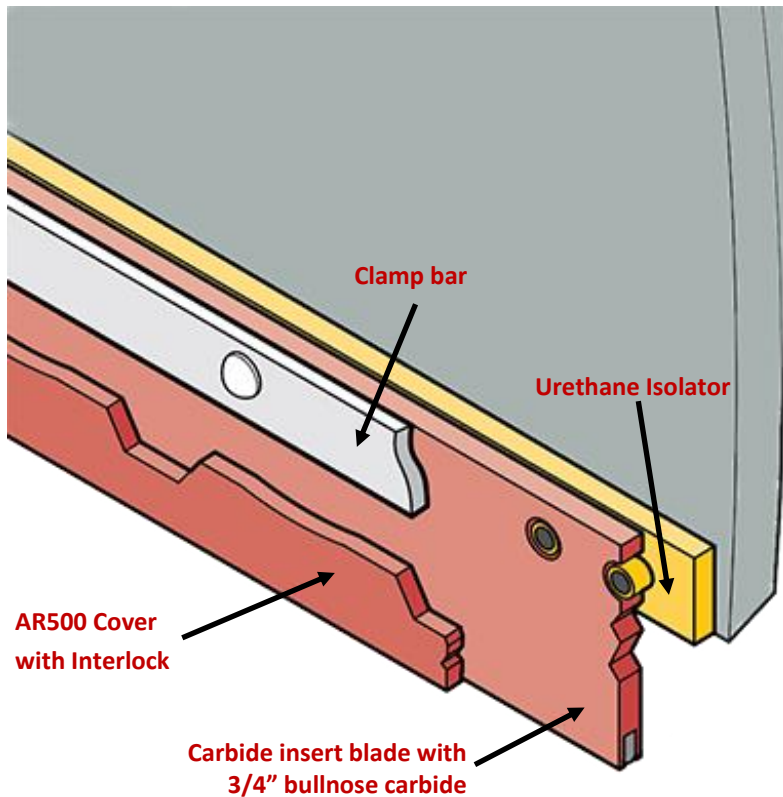
- The 4" Adapter Blade corrects the geometry of the blade system by reducing the total blade system height to a standard 6". This reduces the length of the lever arm and in turn reduces the force that the mounting bolts see by over 30%, preventing broken bolts and bent adapter blades when it matters most.
- The Ironhawk® 4" Adapter Blade uses carbide inserts to provide additional protection for the moldboard. The compact design uses only a single set of bolts and moves the integrated stop from the adapter bar to the clamp bar.
- A single part number will get you everything needed



Description	Part #
4" Adapter Blade Kit for 8 ft articulating plow blade	KIT-AB4-Adapter-TE-8
4" Adapter Blade Kit for 9 ft articulating plow blade	KIT-AB4-Adapter-TE-9
4" Adapter Blade Kit for 10 ft articulating plow blade	KIT-AB4-Adapter-TE-10
4" Adapter Blade Kit for 11 ft articulating plow blade	KIT-AB4-Adapter-TE-11
4" Adapter Blade Kit for 12 ft articulating plow blade	KIT-AB4-Adapter-TE-12
4" Adapter Blade Kit for 14 ft articulating plow blade	KIT-AB4-Adapter-TE-14

ICE-O-FORCE™ BLADE SYSTEM

Expansion joints, pavement changes, and other variations in the road surface create shock and vibration. A rigid blade is not equipped to adapt to these irregularities and will transmit the vibration and noise to the plow truck. Ironhawk's patented Ice-O-Force™ blade system suspends the blade, allowing it to travel 3/8", greatly reducing shock and vibration. Less vibration = less noise, which can significantly help reduce operator fatigue over a long shift.



Dampen Shock and Vibration

A standard plow cutting edge transmits a tremendous amount of vibration into the moldboard and then the plow truck. This vibration can play havoc with a plow truck's mechanical and electrical systems. The Ice-O-Force™ blade systems use a flexible urethane isolator to eliminate the metal-to-metal contact between the blade and the moldboard.



Reduced Driver Fatigue

As any plow truck driver can attest, noise is a major cause of operator fatigue. In-cab noise levels can exceed the OSHA limits for a shift. Our Ice-O-Force™ system has been proven to reduce the in-cab noise levels by 8 to 10 decibels, which is equivalent to reducing the volume by half.

Increase Blade Life 2 to 3 Times

Tungsten carbide's hardness is the key to the long life of a carbide insert blade. However, while it is very hard, it is also brittle and will fracture and fall out of a normal carbide blade over time. The Ice-O-Force™ blade system uses a urethane isolator and an AR500 welded-on cover to protect the carbide, which in turn increases the blade life by 2 to 3x over a typical carbide blade system.

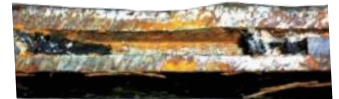
To demonstrate the effectiveness of our vibration isolation technology, we conducted a test with a state DOT. We ran back-to-back tests of a standard carbide blade and then an Ice-O-Force™ blade. The test was conducted using the same truck on the same route. The pictures to the right were taken after running them for the same mileage. The Ice-O-Force™ blade system had a smooth and consistent wear, with no loss of carbide.

Ice-O-Force Carbide Blade



The Ice-O-Force™ Isolated Carbide Blade had smooth and even wear without any signs of fracturing or loss.

Standard Carbide Blade



The standard carbide blade had significant fracturing and loss of carbide.

IRONHAWK®

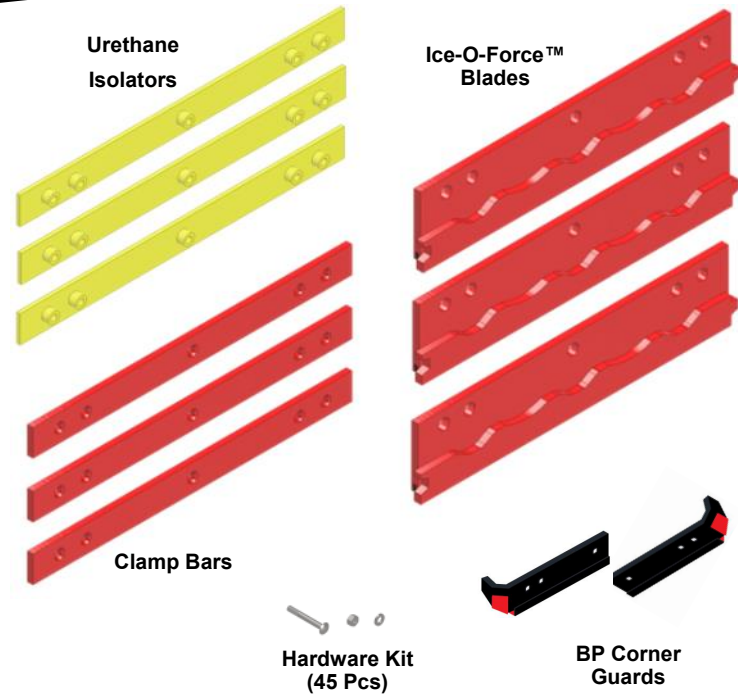
PHONE: 888.843.8612 FAX: 216.481.1156

EMAIL: sales@ironhawkindustrial.com

ICE-O-FORCE™ BLADE SYSTEM KITS

We have bundled our Ice-O-Force™ Blade Systems into kits. A single part number will get you everything needed, including:

- (3) Ice-O-Force™ Carbide Blades with AR500 Cover
- (3) Urethane Isolator - reusable
- (3) Clamp Bar—reusable
- (2) BP Series 6" Corner Guards
- (1) Grade 8 Hardware Kit
- (1) Installation Instructions
- (1) Systems are individually crated



Description	Part #
8 ft Ice-O-Force Isolated Carbide Blade System - Initial Set-up Kit	PBA-IF8-INT-C
9 ft Ice-O-Force Isolated Carbide Blade System - Initial Set-up Kit	PBA-IF9-INT-C
10 ft Ice-O-Force Isolated Carbide Blade System - Initial Set-up Kit	PBA-IF10-INT-C
11 ft Ice-O-Force Isolated Carbide Blade System - Initial Set-up Kit	PBA-IF11-INT-C
12 ft Ice-O-Force Isolated Carbide Blade System - Initial Set-up Kit	PBA-IF12-INT-C
14 ft Ice-O-Force Isolated Carbide Blade System - Initial Set-up Kit	PBA-IF14-INT-C
8 ft Ice-O-Force Isolated Carbide Blade System - Replacement Kit	PBA-IF8R-INT-C
9 ft Ice-O-Force Isolated Carbide Blade System - Replacement Kit	PBA-IF9R-INT-C
10 ft Ice-O-Force Isolated Carbide Blade System - Replacement Kit	PBA-IF10R-INT-C
11 ft Ice-O-Force Isolated Carbide Blade System - Replacement Kit	PBA-IF11R-INT-C
12 ft Ice-O-Force Isolated Carbide Blade System - Replacement Kit	PBA-IF12R-INT-C
14 ft Ice-O-Force Isolated Carbide Blade System - Replacement Kit	PBA-IF14R-INT-C

ICE-O-FORCE HD™ BLADE SYSTEM

Expansion joints, pavement changes, and other variations in the road surface create shock and vibration. A rigid blade is not equipped to adapt to these irregularities and will transmit the vibration and noise to the plow truck. Ironhawk's patented Ice-O-Force HD™ blade system suspends the blade, allowing it to travel 3/8", greatly reducing shock and vibration. Less vibration = less noise, which can significantly help reduce operator fatigue over a long shift.

66% More Carbide

We designed the HD version of our popular Ice-O-Force™ system initially for western state DOTs that were looking for a long-life blade for their long stretches of highway.

One of the key design parameters for a carbide insert blade is how much tungsten carbide is brazed into the blade. We weld 2" x 10" carbide insert blocks to the back of a 3/4" x 7" carbide insert blade. These blocks increase the amount of tungsten carbide wear surface by 66% making it the most carbide in a single-blade system.

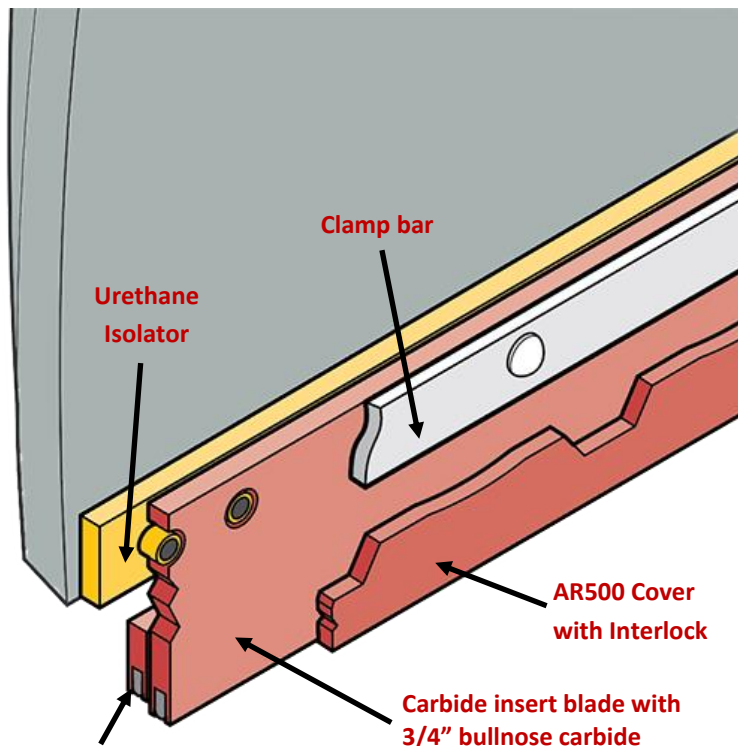
Dampen Shock and Vibration

A standard plow cutting edge transmits a tremendous amount of vibration into the moldboard and then the truck. This vibration can play havoc with a plow truck's mechanical and electrical systems. The Ice-O-Force HD™ blade systems use a flexible urethane isolator to eliminate the metal-to-metal contact between the blade and the moldboard.



Reduced Driver Fatigue

As any plow truck driver can attest, noise is a major cause of operator fatigue. In-cab noise levels can exceed the OSHA limits for a shift. Our Ice-O-Force HD™ system has been proven to reduce the in-cab noise levels by 8 to 10 decibels, which is equivalent to reducing the volume in half.



2" x 10" Carbide insert backers
with 3/4" bullnose carbide

Increase Blade Life 2 to 3 Times

Tungsten carbide's hardness is the key to the long life of a carbide insert blade. However, while it is very hard, it is also brittle and will fracture and fall out of a normal carbide blade over time. The Ice-O-Force HD™ blade system uses a urethane isolator and an AR500 welded-on cover to protect the carbide, which in turn increases the blade life by 2 to 3x over a typical carbide blade system.

To demonstrate the effectiveness of our vibration isolation technology, we conducted a test with a state DOT. We ran back-to-back tests of a standard carbide blade and then an Ice-O-Force™ blade. The test was conducted using the same truck on the same route. The Ice-O-Force™ blade system had a smooth and consistent wear with no loss of carbide, whereas the standard carbide had lots of fractured and missing pieces of carbide.

IRONHAWK®

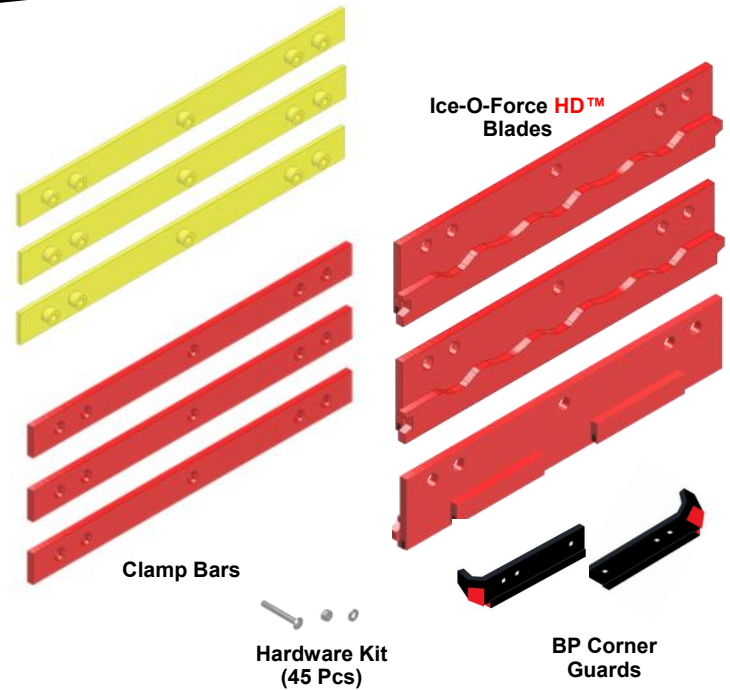
PHONE: 888.843.8612 FAX: 216.481.1156

EMAIL: sales@ironhawkindustrial.com

ICE-O-FORCE HD™ BLADE SYSTEM KITS

We have bundled our Ice-O-Force HD™ Blade Systems into kits. A single part number will get you everything needed, including:

- (3) Ice-O-Force HD™ Carbide Blades with AR500 Cover
- (3) Urethane Isolator - reusable
- (3) Clamp Bar—reusable
- (2) BP Series 8" Corner Guards
- (1) Grade 8 Hardware Kit
- (1) Installation Instructions
- (1) Systems are individually crated



Description	Part #
8 ft Ice-O-Force HD Isolated Carbide Blade System - Initial Set-up Kit	PBA-IF8-INT-HD
9 ft Ice-O-Force HD Isolated Carbide Blade System - Initial Set-up Kit	PBA-IF9-INT-HD
10 ft Ice-O-Force HD Isolated Carbide Blade System - Initial Set-up Kit	PBA-IF10-INT-HD
11 ft Ice-O-Force HD Isolated Carbide Blade System - Initial Set-up Kit	PBA-IF11-INT-HD
12 ft Ice-O-Force HD Isolated Carbide Blade System - Initial Set-up Kit	PBA-IF12-INT-HD
14 ft Ice-O-Force HD Isolated Carbide Blade System - Initial Set-up Kit	PBA-IF14-INT-HD
8 ft Ice-O-Force HD Isolated Carbide Blade System - Replacement Kit	PBA-IF8R-INT-HD
9 ft Ice-O-Force HD Isolated Carbide Blade System - Replacement Kit	PBA-IF9R-INT-HD
10 ft Ice-O-Force HD Isolated Carbide Blade System - Replacement Kit	PBA-IF10R-INT-HD
11 ft Ice-O-Force HD Isolated Carbide Blade System - Replacement Kit	PBA-IF11R-INT-HD
12 ft Ice-O-Force HD Isolated Carbide Blade System - Replacement Kit	PBA-IF12R-INT-HD
14 ft Ice-O-Force HD Isolated Carbide Blade System - Replacement Kit	PBA-IF14R-INT-HD

PLOW BLADES

Carbide Insert Plow Blades

	Part #	Description	Gauge	Punch Pattern
5" & 6" Carbide Insert Blades	C36634B	3/4" x 6" x 36" Std. Hwy. Punch	2"	3-3-12
	C48634B	3/4" x 6" x 48" Std. Hwy. Punch	2"	3-3-12
	C36634B6	3/4" x 6" x 36" Std. Hwy. Punch	2"	3-3-6
	C48634B6	3/4" x 6" x 48" Std. Hwy. Punch	2"	3-3-6
	C36578A	7/8" x 5" x 36" Std. Hwy. Punch	1-1/2"	3-3-12
	C48578A	7/8" x 5" x 48" Std. Hwy. Punch	1-1/2"	3-3-12
Underbody Blades	C36578AB	7/8" x 5" x 36" Top Bevel	1-1/2"	3-3-12
	C48578AB	7/8" x 5" x 48" Top Bevel	1-1/2"	3-3-12
Interlock Cover	IT36	3/4" x 6" x 36" w/interlocking cover	2"	3-3-12
	IT48	3/4" x 6" x 48" w/interlocking cover	2"	3-3-12

PLOW BLADES

	Part #	Description	Gauge	Punch Pattern
Steel Plow Blades	S60658A	5/8" x 6" x 5' Standard Highway Punch	1-1/2"	3-3-12
	S72658A	5/8" x 6" x 6' Standard Highway Punch	1-1/2"	3-3-12
	S60634A	3/4" x 6" x 5' Standard Highway Punch	1-1/2"	3-3-12
	S72634A	3/4" x 6" x 6' Standard Highway Punch	1-1/2"	3-3-12
	S120658A	5/8" x 6" x 10' Standard Highway Punch	1-1/2"	3-3-12
	S132658A	5/8" x 6" x 11' Standard Highway Punch	1-1/2"	3-3-12
	S120612AP	1/2" x 6" x 10' - cover blade for carbide	1-1/2"	3-3-6
	S132612AP	1/2" x 6" x 11' - cover blade for carbide	1-1/2"	3-3-6
	S144612AP	1/2" x 6" x 12' - cover blade for carbide	2"	3-3-6
Grader Blades	GR5D9553	5/8" x 6" x 6' Heat Treated DBC	-	3-3-6
	GR5D9554	5/8" x 6" x 7' Heat Treated DBC	-	3-3-6
	GR7T1634	3/4" x 8" x 6' DBC (5/8" plow bolts)	-	3-3-12
	GR7T1623	3/4" x 8" x 7' DBC (5/8" plow bolts)	-	3-3-12
	GR5D9558	3/4" x 8" x 6' Heat Treated DBC (5/8" bolts)	-	3-3-6
	GR5D9559	3/4" x 8" x 7' Heat Treated DBC (5/8" bolts)	-	3-3-6

PLOW BLADES

Rubber Plow Blades



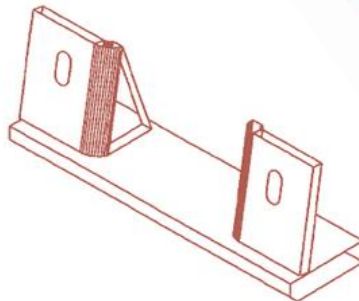
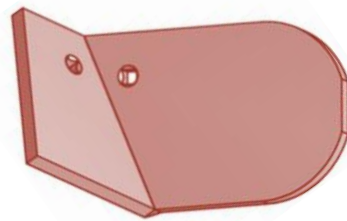
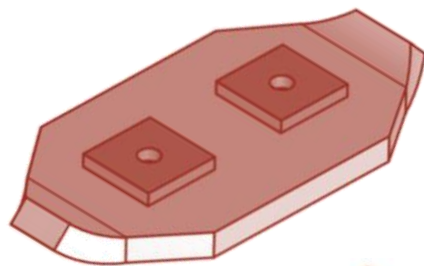
Part #	Description
RE1201015	1-1/2" x 10" x 10' Rubber Plow Blade
RE1321015	1-1/2" x 10" x 11' Rubber Plow Blade
RE1441015	1-1/2" x 10" x 12' Rubber Plow Blade

Rubber Snow Deflector



Part #	Description
RD1201212	1/2" x 12" x 10' Rubber Snow Deflector
RD1321212	1/2" x 12" x 11' Rubber Snow Deflector
RD1441212	1/2" x 12" x 12' Rubber Snow Deflector
RD5010012	1/2" x 12" x 50' Bulk Roll Rubber Snow Deflector

PLOW SHOES & NOSEPIECES



PLOW SHOES & NOSEPIECES

Ironhawk® Moldboard Shoes

- Abrasion-resistant AR500 Steel Plate
- Withstands High-Impact Stresses
- Lighter Weight
- Larger Wear Surface
- Made in Pennsylvania
- Front & Wing plow versions available



**Fabricated Moldboard Shoe
(For use on FRONT plows)**

Part #: PS-329F



**Fabricated Moldboard Shoe
(For use on WING plows)**

Part #: PS-328W



**Fabricated Moldboard Shoe
for Monroe Plow**

Part #: PS-500



**Fabricated Moldboard Shoe
(For use on FRONT plows)**

Part #: PS-325

IRONHAWK®

PHONE: 888.843.8612 FAX: 216.481.1156

EMAIL: sales@ironhawkindustrial.com

PLOW SHOES & NOSEPIECES

Ironhawk® Moldboard Shoes



Mounting Bracket

Part #: AP100



2-Hole Mushroom Shoe

Part #: PS-13M

2-Hole Mushroom Shoe with Mounting Bracket

Part #: AP100 / PS-13M

IRONHAWK®

PHONE: 888.843.8612 FAX: 216.481.1156

EMAIL: sales@ironhawkindustrial.com

PLOW SHOES & NOSEPIECES

One-Way Plow Nosepieces (Standard Plow Blades)



Valk Nosepiece

Part #: NS-112



Valk Nosepiece

Part #: NS-111



Valk Nosepiece

Part #: NS-147892

PLOW SHOES & NOSEPIECES

One-Way Plow Nosepieces (Standard Plow Blades)



Viking Nosepiece
(Also fits Tenco Plows)

Part #: NS-517



Monroe Nosepiece

Part #: NS-518

Monroe Nosepiece
(Lake Effect Version)

Part #: NS-518-LE

PLOW SHOES & NOSEPIECES

Ironhawk® Moldboard Shoes



Valk Nosepiece
Part #: NS-147889-JM



Valk Nosepiece
Part #: NS-147892-JM



Tenco Nosepiece (Joma)
Part #: NS-840-JM



Valk Nosepiece
Part #: NS-105

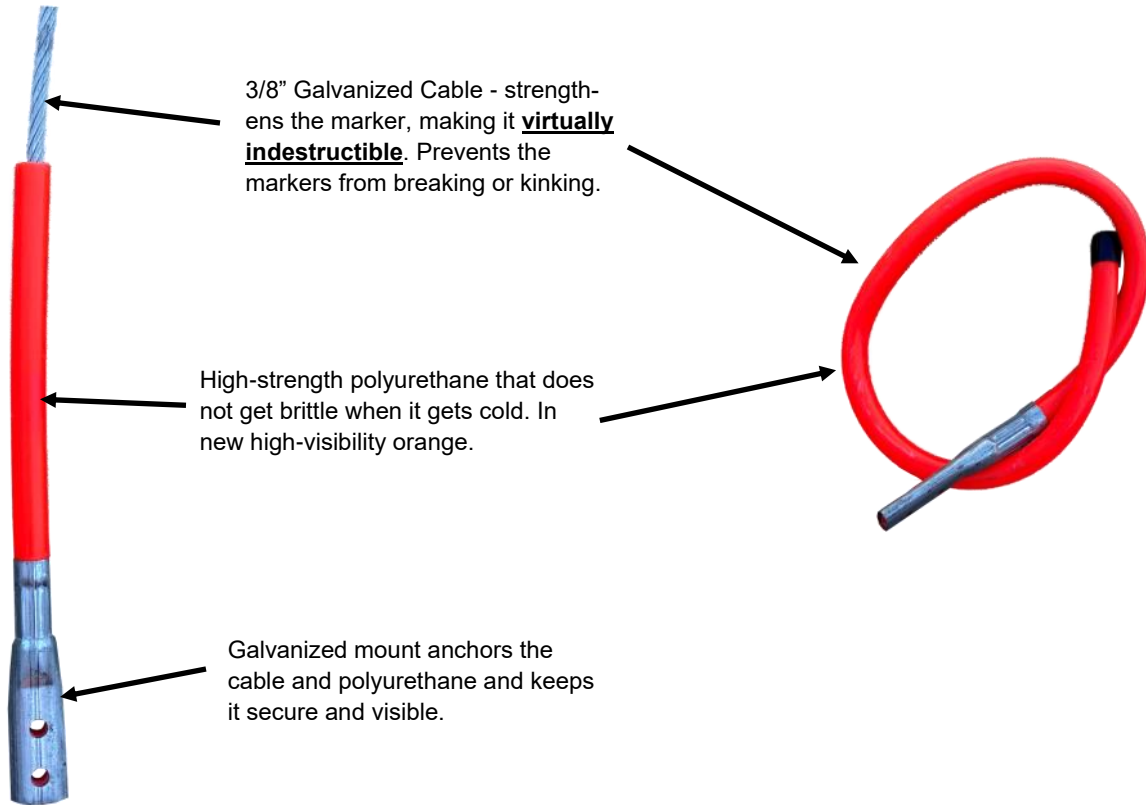
SNOWPLOW

ACCESSORIES



SNOW PLOW ACCESSORIES

Premium Plow Marker Kits



30" Plow Marker Kits
Part #: GM30

36" Plow Marker Kits
Part #: GM36

48" Plow Marker Kits
Part #: GM48

SNOW PLOW ACCESSORIES

Polyurethane Spinners

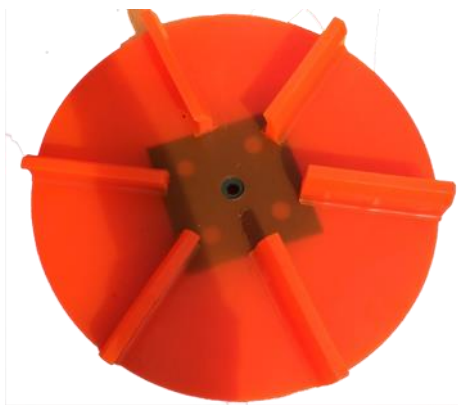


18" Clockwise Spinner

Part #: SS184C

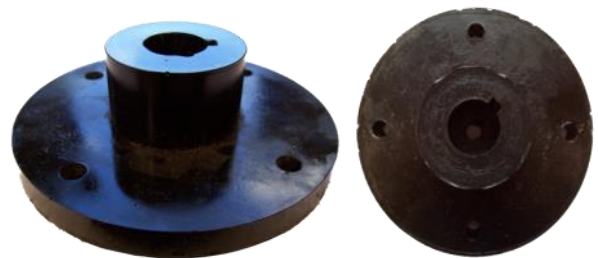
18" Counterclockwise Spinner

Part #: SS184CC



18" Counterclockwise Spinner with Built-in Steel Hub

Part #: SS184CC-H

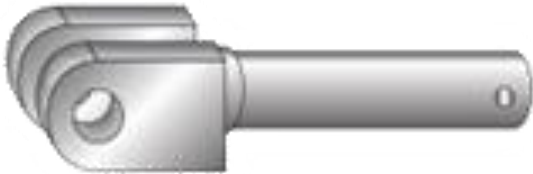


Polyurethane Spinner Hubs

Part #: HUB512

SNOW PLOW ACCESSORIES

Clevis Pins and Lifting Yokes



Stainless Steel Clevis Pin UDOT Spec #EQN-41A

Part #: CP105



The Ironhawk® Snow Plow Yoke allows for unrestricted movement and eliminates stress points that are on current designs.

Snow Plow Yoke with Shackle

Part #: LL1002

Snow Plow Yoke without Shackle

Part #: LL1001

IRONHAWK®

PHONE: 888.843.8612 FAX: 216.481.1156

EMAIL: sales@ironhawkindustrial.com

MILLING TOOLS



ROAD REHABILITATION TOOLS

Ironhawk® Scarifier and Milling Tools

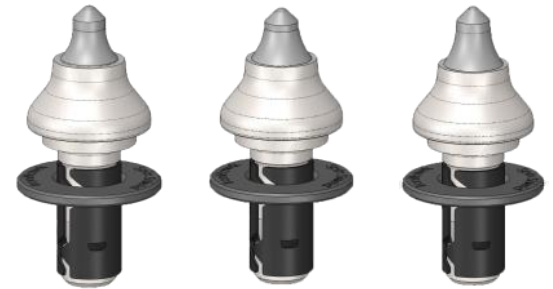
Precision manufacturing using premium-grade tungsten carbide and a proprietary high-strength brazing enable Ironhawk® 22 mm Scarifier Tools to last under extreme conditions. We offer tools with and without washers and with both the long and "wedding band" style retainers for both the 2000/2500 and 2100 series scarifier boards. High-quality retaining sleeves ensure that the tools properly rotate for maximum wear and are easy to remove.

Ironhawk® 22 mm Scarifier Tools



SB-K1LS28 SB-K1LW28 SB-K9LW70 SB-C87KCSBSR

Ironhawk® 19 mm Milling Tools



CT-K6FW29 CT-K6FW68 CT-K6FW84

	Description	Part #	Tool Spacing	Box Qty
Scarifier Tools & Boards	22 mm Scarifier Tool - Long Sleeve	SB-K1LS28	1.5"	60
	22 mm Scarifier Tool - Interlocking Washers	SB-K1LW28	1.5"	60
	22 mm Scarifier Tool - Long Sleeve Bump	SB-K9LW70	1.72"	40
	22 mm Scarifier Tool - Wedding Band	SB-C87KCSBSR	1.72"	50
	36" Scarifier Board (5/8" bolts)	SB-2100358	-	-
	48" Scarifier Board (5/8" bolts)	SB-2100458	-	-
19 mm Milling Tools	19 mm Milling Tool	CT-K6FW29	-	50
	19 mm Milling Tool	CT-K6FW68	-	50
	19 mm Milling Tool	CT-K6FW84	-	50

LOADER EDGES



ROAD REHABILITATION TOOLS

Loader Edges

Equipment Platform	Blade Type	# Blades Needed	Part Number	(Qty) & Size of Bolts per Blade
LeeBoy 3000 Force Feed Loader (5 pc w/ carbide)	Intermediate Blade	2	LBOY3INT-CI	(2) 5/8"
	End Blade	2	LBOY3END-CI	(4) 5/8"
	Center Blade	1	LBOY3CTR-CI	(7) 5/8"
JCB 426Z	Center Blade	1	CAS 372081A1	(6) 3/4"
	End Blade	2	CAS 372082A2	(5) 3/4"
JCB 426Z	Center Blade	1	JCBD23787	(9) 3/4"
	End Blade	2	JCB510/86102	(3) 3/4"
JCB 436Z	Center Blade	1	ACS71748242	(6) 7/8"
	End Blade	2	ACS71748241	(4) 7/8"
Hyundai HL740	3 Piece Blade	3	D18603	(6) 5/8"
Hyundai HL740-7	End Blade	2	HYU61LD00370	(2) 3/4"
	Center Blade	2	HYU61LF00330	(4) 3/4"
Hyundai HL740-9	Center Blade	1	HYU61LN00311	(5) 3/4"
	End Blade	2	HYU61LM00320	(4) 3/4"
Hyundai HL740-9A	3 Piece Blade	3	HYUX401742	(3) 1"

ROAD REHABILITATION TOOLS

Loader Edges

Equipment Platform	Blade Type	# Blades Needed	Part Number	(Qty) & Size of Bolts / Blade
John Deere and Case	Loader Blade	2	520002	(8) 1"
John Deere 544H	Center Blade	2	JDT157311 (15521)	(3) 3/4"
	End Blade	2	JDT146672 (13058)	(3) 3/4"
John Deere 644	Loader Blade	3	CAT4T6457	(6) 1"
Komatsu 250-3	Center Blade	1	KOM418815A110	(4) 1"
	End Blade	2	KOM419815A120	(2) 1"
Case 721 D	Center Blade	1	CAS8500177	(6) 1"
	End Blade	2	CAS8500178	(4) 1"
Athey Belt Loader (5 Blade Setup with Carbide)	End Blade w/ Carbide Impreg.	2	ATHX080217 CI2	(6) 1/2"
	Intermediate Blade w/ Carbide Impreg.	2	ATHX080216 CI2	(2) 1/2"
	Center Blade w/ Carbide Impreg.	1	ATHX110854 CI2	(12) 1/2"
Athey Belt Loader (7-12 Late Production 5 Blade Setup with Carbide)	End Blade w/ Carbide Impreg.	2	ATHX080217 CI2	(6) 1/2"
	Intermediate Blade w/ Carbide Impreg.	2	ATHP203526 CI2	(2) 1/2"
	Center Blade w/ Carbide Impreg.	1	ATHX110854 CI2	(12) 1/2"